

ANIMAL GENETIC RESOURCES IN THE CZECH REPUBLIC



Michal Milerski

Research institute of
Animal Science

OLD KLADRUBY HORSE



OLD KLADRUBY HORSE



OLD KLADRUBY HORSE

54 stallions

340 mares



BOHEMIAN-MORAVIAN BELGIAN HORSE



52 stallions

369 mares

SILESIAN NORIC HORSE



39 stallions

235 mares

SILESIA NORIC HORSE



HUCUL

17 stallions

164 mares



CZECH SPOTTED CATTLE



IN VITRO

12 411 SD

(22 BULLS)

952 embryos

CZECH RED CATTLE



- 80 cows
 - 38 heifers
 - 4 bulls
-

CZECH RED CATTLE











PŘEŠTICE PIG



28 boars

244 sows

ŠUMAVA SHEEP

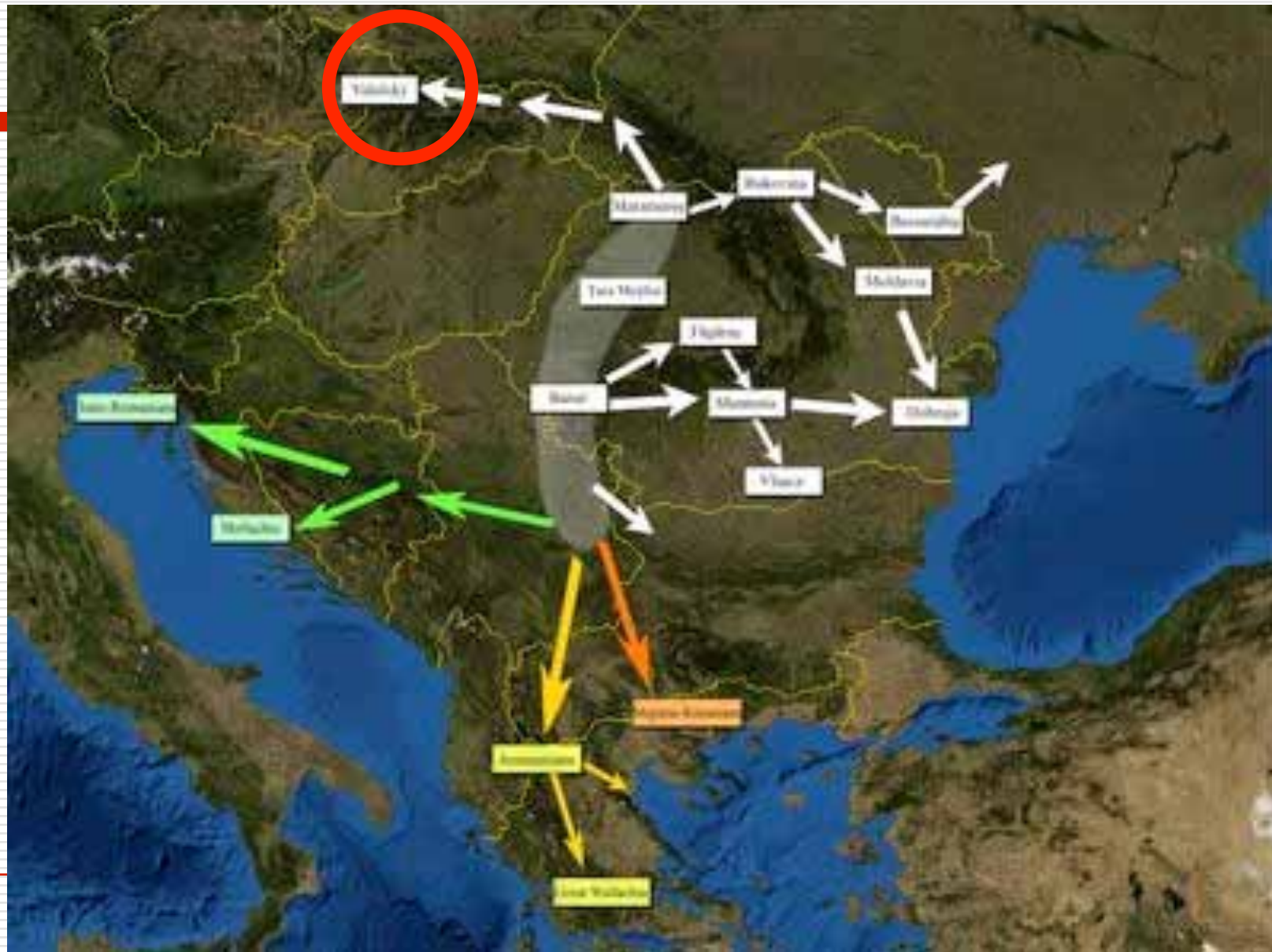


2422 ewes
165 rams

VALACHIAN SHEEP



Valašská kolonizace KARPAT



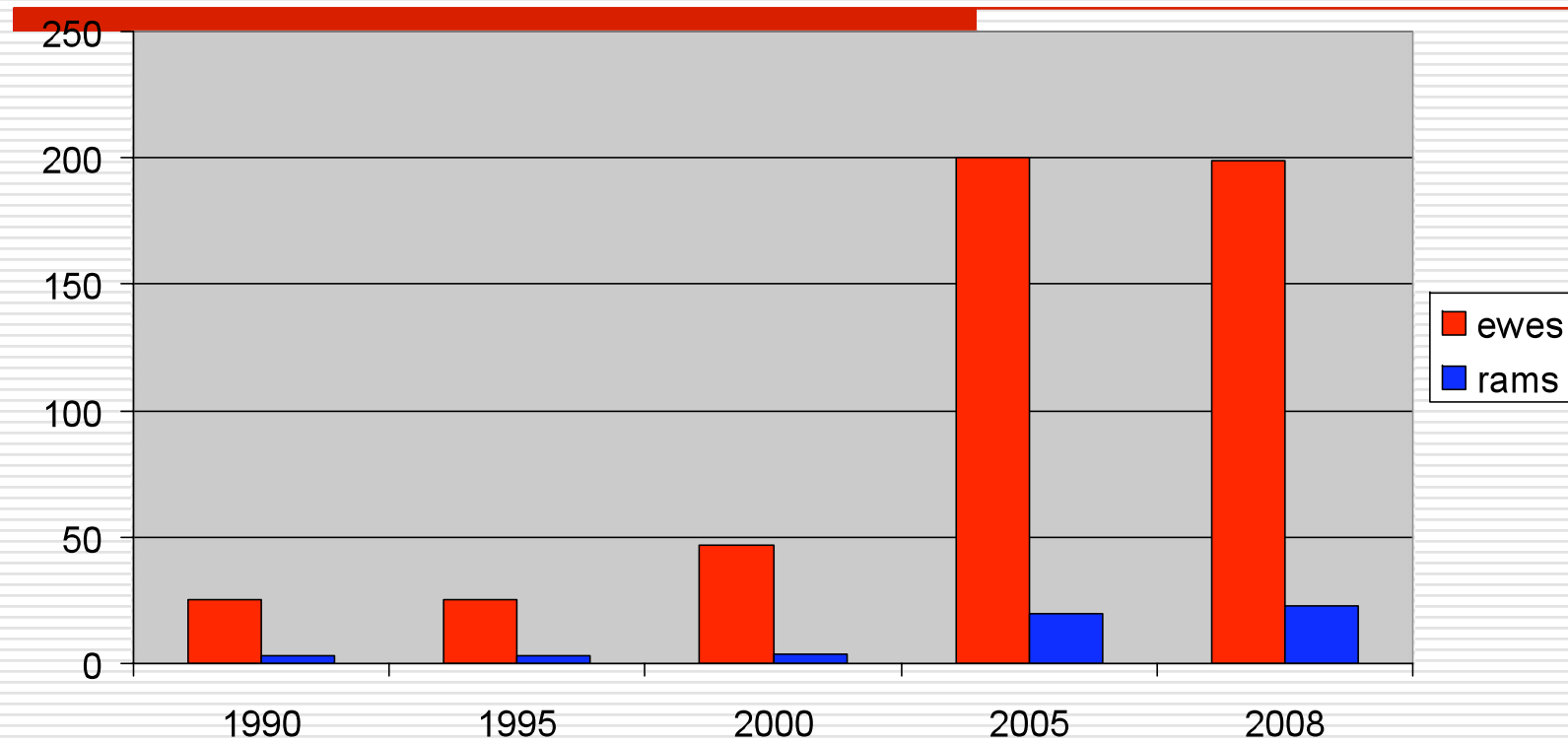


VALACHIAN SHEEP

- 205 ewes
- 23 rams



Changes in numbers of valachian sheep in GR



$N_e \approx 15-20$

Regeneration of black variety of walachian sheep



1920s



2008

WHITE SHORTHAIRED GOATS



BROWN SHORTHAIRED GOATS



CZECH GOLDEN SPECKLED HEN



CZECH GOLDEN HEN



CZECH GOOSE



COYPU

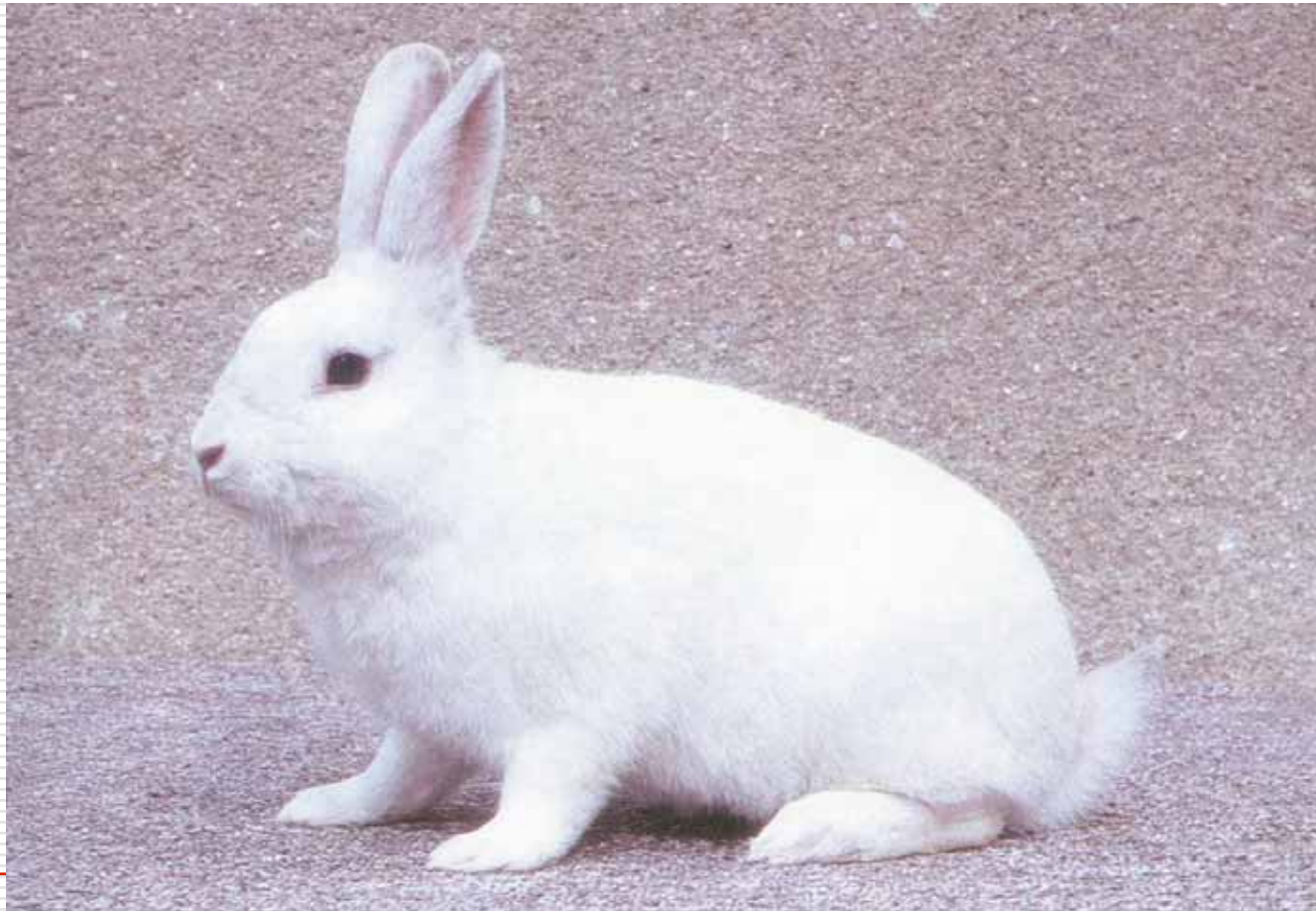


RABBITS – ČESKÝ STRAKÁČ



RABBITS

MORAVSKÝ BÍLÝ HNĚDOOKÝ



RABBITS – ČESKÝ ALBÍN



RABBITS – ČESKÝ ČERVENÝ



ČESKÝ ČERNOPEŠÍKATÝ



FISCH



FISH



FISH – Milevsky Lysec





BEEES - KRAŇSKÁ BEE



National Program of Farm Animal Resources Conservation

Cryoconservation

DNA storage

Supporting of *in situ* conservation

